

41 Dudley Drive Goonellabah

Table of Contents

- | [Property Details](#)
- | [Photo Gallery](#)
- | [Map](#)
- | [Contact For Inspection](#)

Property Details

41 Dudley Drive, Goonellabah



SOLD BY THE WAL MURRAY TEAM

3  **1**  **1** 

Perfectly positioned just a 10-minute walk to Goonellabah Shopping Village and the Sports & Aquatic Centre, this low-set brick home offers comfort, convenience and peace of mind📍located safely out of the flood zone.

Move-in ready, the home features a generous living area filled with natural light, three well-sized bedrooms all with built-in wardrobes, ceiling fans and a thoughtfully designed two-way bathroom with direct access from the main bedroom. The open plan kitchen and dining area create a welcoming hub of the home, with easy access to the internal laundry and a covered outdoor BBQ area📍perfect for entertaining.

Step outside to a fully fenced backyard offering plenty of space for children and pets, along with established gardens, a garden shed and a small greenhouse for the green thumb. A single lock-up garage provides secure parking or potential for a workshop, plus there's an additional off-street parking space beside the driveway.

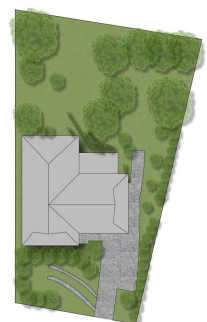
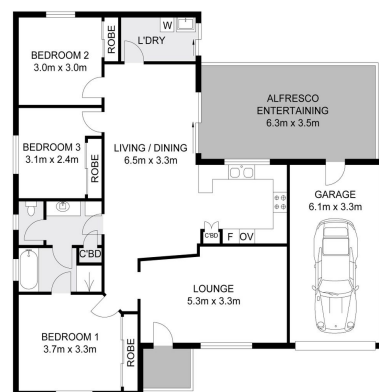
This is an ideal home for families, first-home buyers, or downsizers looking for low-maintenance living in a central location.

- 3 Bedrooms
- 1 Bathroom
- 1 Garage
- Secure Parking
- Outdoor Entertaining
- Fully Fenced
- Built In Robes

\$659,000

Photo Gallery



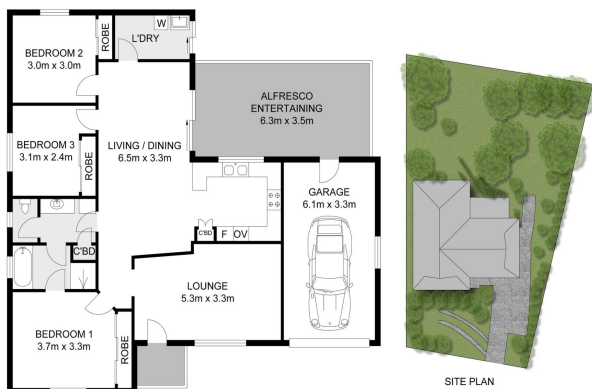


Dimensions are approximate. All information contained herein gathered from sources we believe to be reliable. However we cannot guarantee its accuracy and interested persons should rely on their own enquiries. Single intended use proposed only, not to be duplicated © 2023 www.visionmedia.com.au - 0411 444 223

INT: 98.6m²
EXT: 22.5m²
GARAGE: 20.1m²



41 Dudley Drive, Goonellabah



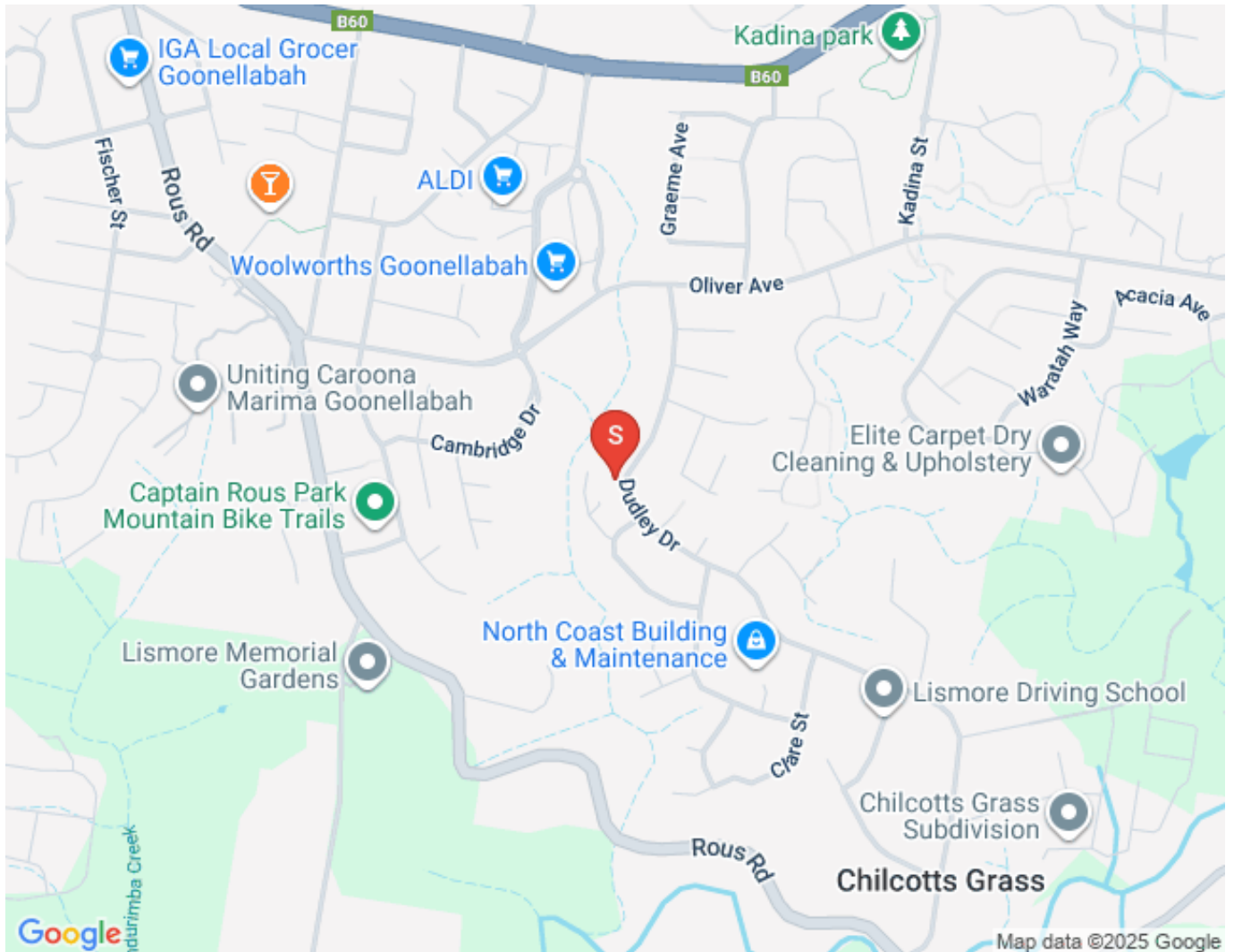
Dimensions are approximate. All information contained herein gathered from sources we believe to be reliable. However we cannot guarantee its accuracy and interested persons should rely on their own enquiries. Single intended use purposes only, not to be duplicated © 2023 www.hisimmedia.com.au 0411 444 223

41 Dudley Drive, Goonellabah

INT : 98.6m²
EXT : 22.5m²
GARAGE : 20.1m²

Real national
Wal Murray & Co

Map



Contact For Inspection



CORY BYRNE

LICENSED REAL ESTATE AGENT

0447 128 150

cory@walmurray.com.au